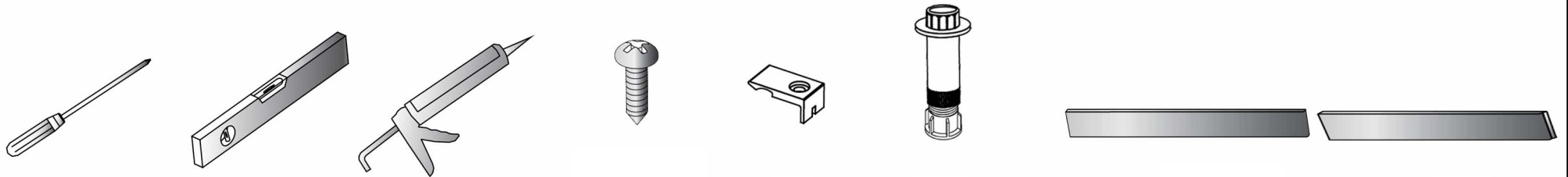


SHOWER TRAY INSTRUCTION

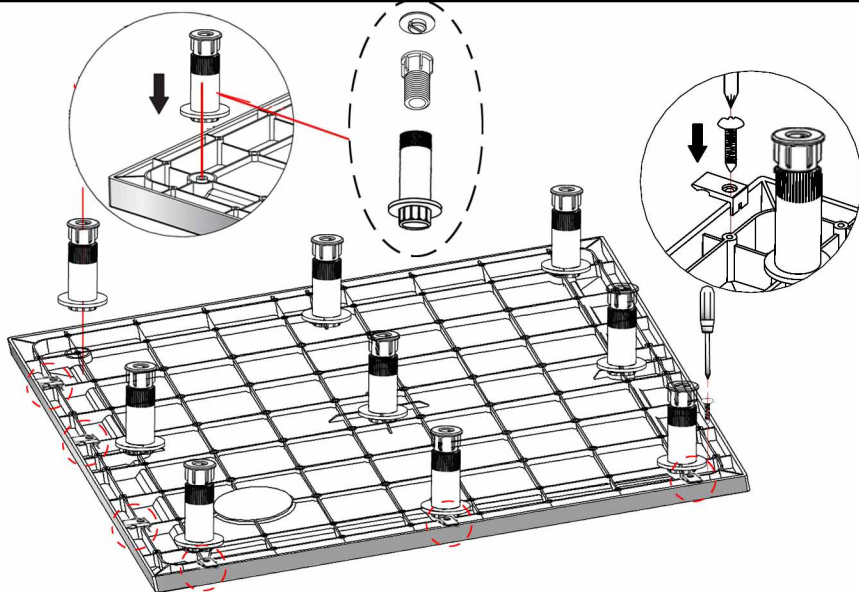


5 711112 076405
No. 1043 Rev. 01

TOOLS REQUIRED

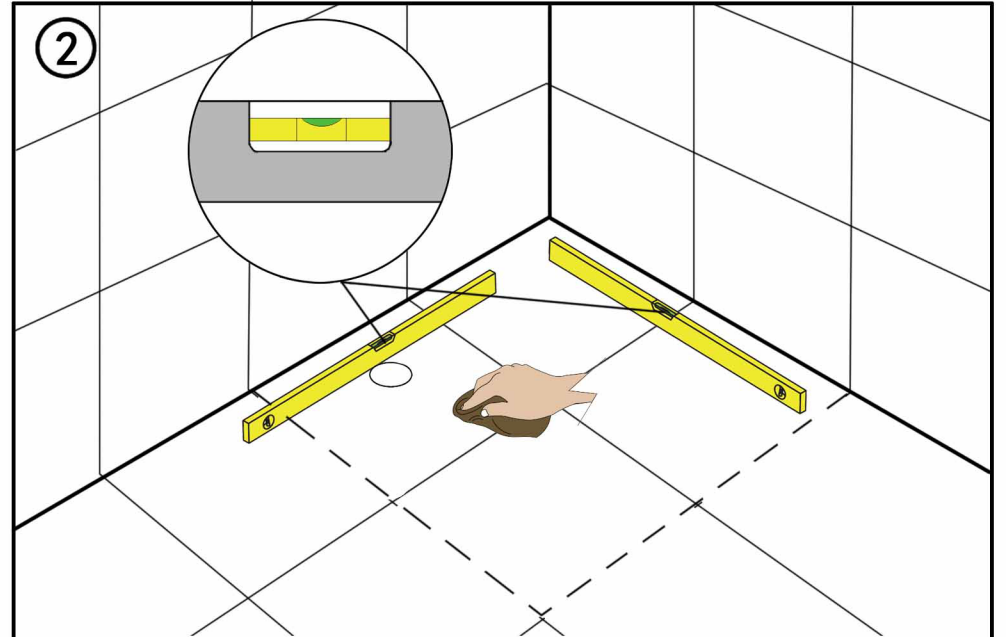


①



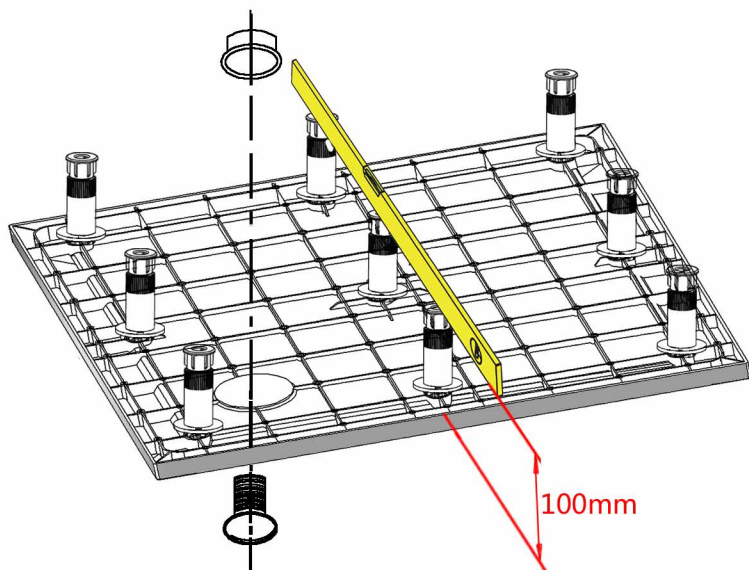
turn the tray over and use the cardboard packaging as a protective mat , and insert the feet to the indicated positions..screw the panel clips into position on the side that the panels will be attached

②



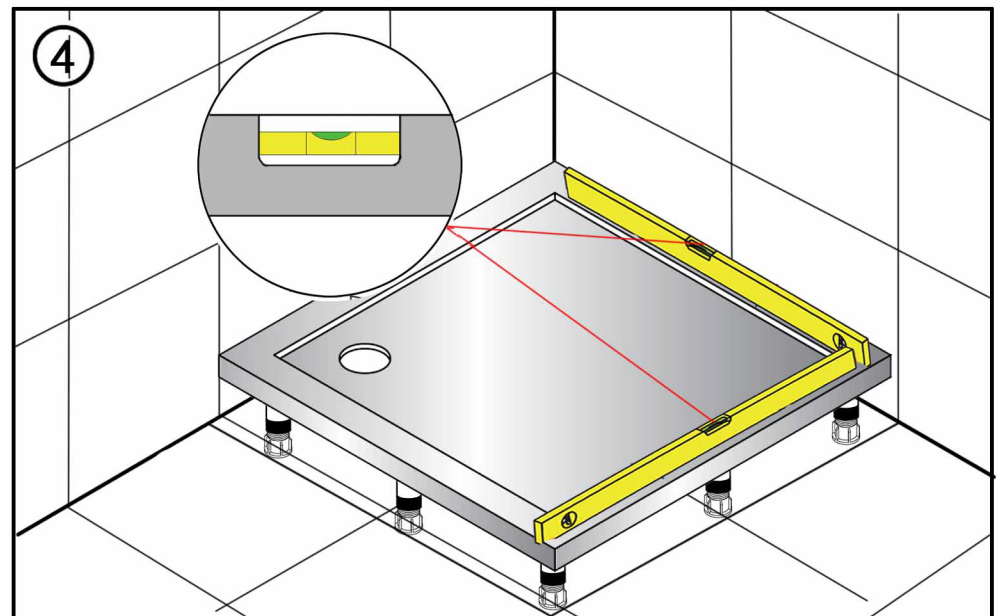
ensure that the location of the shower tray is firm,level and clean.

③



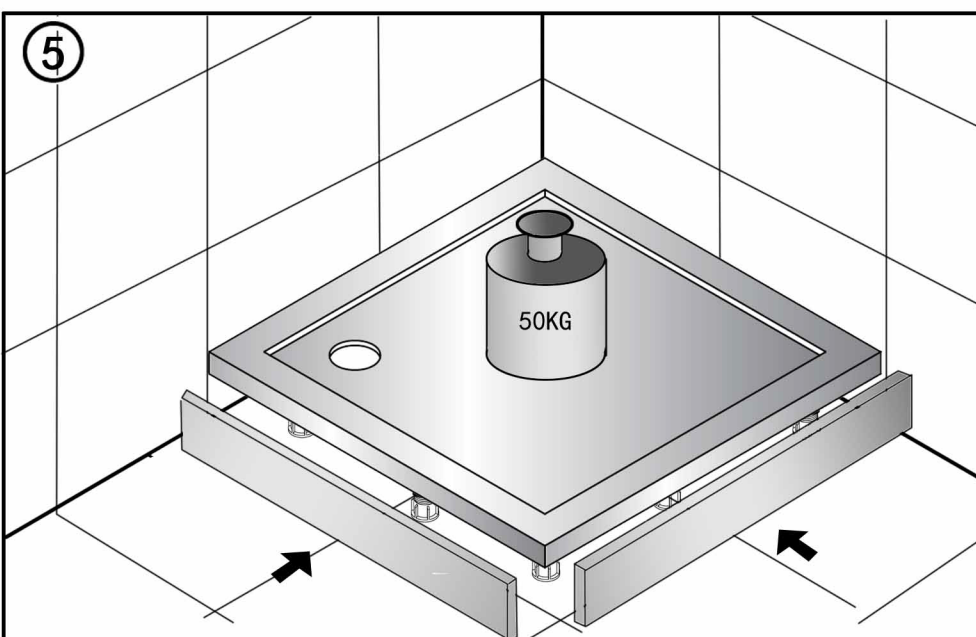
Remove protective plastic film from the areas near waste and those sides of the tray which will be against a wall. Fit the shower tray waste. all feet should be adjusted to 100mm.

④



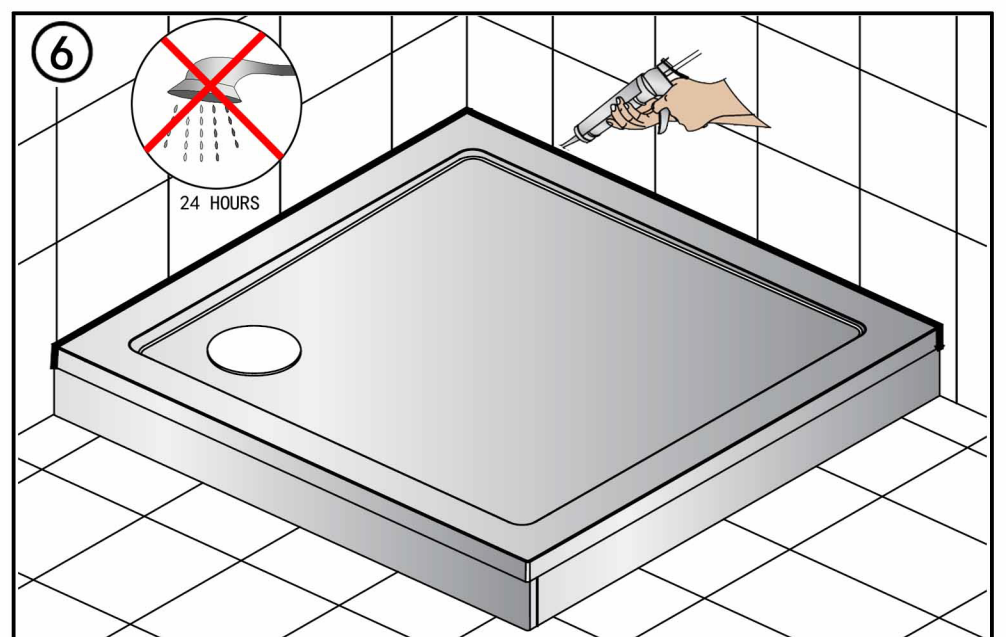
Place the tray into position and lever both ways using the legs.After the tray has been levelled adjust all the inner feet to stabilise the tray. When level fix these legs to the floor with silicon sealant.

⑤



first fix the rebated panel pushing it firmly on to the panel clips,then fix the remaining panel in the same manner.

⑥



lever the tray and allow to set for 24 hours.